

# Cooking ranges for every application

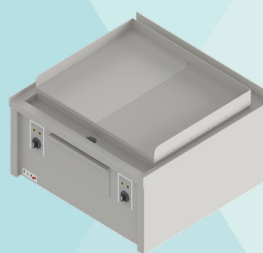
## HE-500 series

### FEATURES

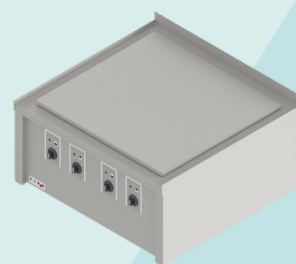
- A variety of modules
- Efficient cooking in the smallest of spaces
- Proven from gastronomy to high-performance kitchens such as cruise ships and Airline catering

### TYPES

- Ceramic hob with infrared radiation
- Ceramic hob with induction
- Grill / Griddle
- Steel hob



Grill / Griddle



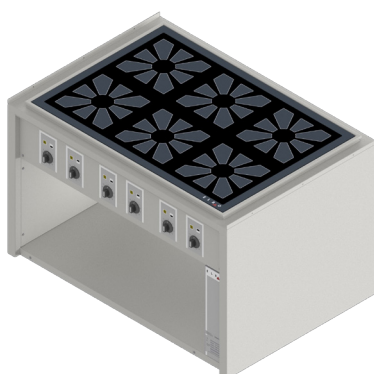
steel hob

### YOUR ADVANTAGES

- 100% capacity and load
- Maximum efficiency in food preparation
- 2 to 6 cooking zones (Ceran, Grill / Griddle)
- Combination Grill / Griddle possible
- 2 to 4 cooking zones (steel hob)



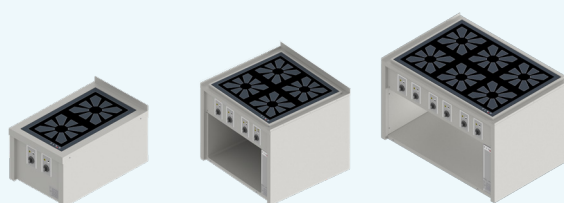
Ceramic hob /  
Induction hob



# Cooking ranges for every application

## HE-500 series

● Standard ○ Optional



Type	2 zones	4 zones	6 zones
<b>Ceramic hob / induction hob</b>	●	●	●
External dimensions in mm (width x depth x height)	500 x 800 x 700	840 x 800 x 700	1150 x 800 x 700
Heating with infrared radiation	2 à 4,0 kW	4 à 4,0 kW	6 à 4,0 kW
Infrared radiation and energy-saving switch (pot detection)	○	○	○
Heating with induction	2 à 5,0 kW	4 à 5,0 kW	6 à 5,0 kW
Operation on one or both sides	○	○	○
<b>Grill / Griddle</b>	●	●	●
Width x depth in mm, maximum operating temperature 320 °C	400 x 600	740 x 600	1050 x 600
Electrical power	6,0 kW	12,0 kW	18,0 kW
<b>Steel hob</b>	●	●	-
Width x depth in mm, maximum operating temperature 450 °C	396 x 680	720 x 680	-
Electrical power	8,0 kW	16,0 kW	-
<b>Options / Installation</b>			
Impact protection strips on one side / both sides, 100 mm / 150 mm each	○	○	○
Mixer tap 3/4"	○	○	○
Assembly with ELRO MetaTherm / VacuTherm cooking systems	○	○	○
Connection to external power optimization system LBS, DIN18'875	○	○	○
Open hygiene compartment H2, one-sided / continuous in mm (width x depth)	330 x 742 x 408	660 x 742 x 408	970 x 742 x 408
Voltage 400 V / 440 V	○	○	○
Installation on CNS base	○	○	○
Installation on a concrete base	○	○	○
Wall mounting	○	○	○
Mobile Version	○	○	○

### CONTACT:

**ELRO-WERKE AG**  
 Wohlerstrasse 47  
 CH-5620 Bremgarten  
[www.elro.ch](http://www.elro.ch)

**ELRO Switzerland and international**  
**Tel.** +41 56 6489-111  
[verkauf@elro.ch](mailto:verkauf@elro.ch)